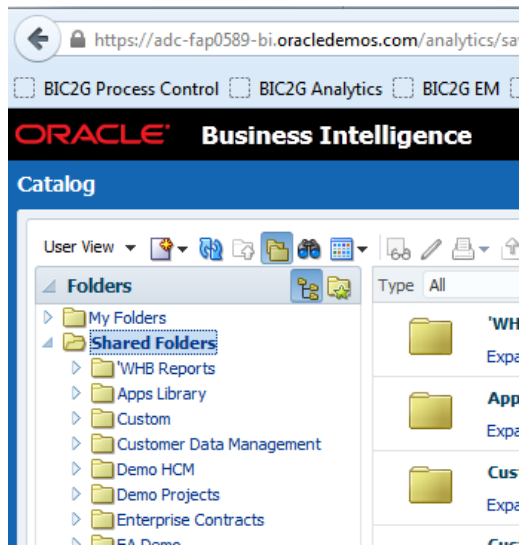
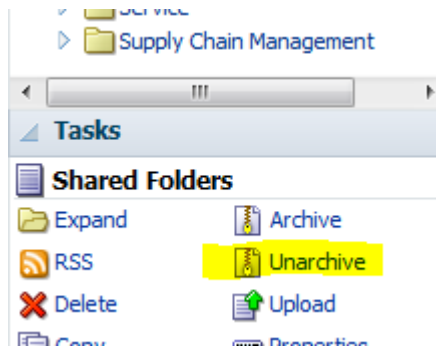


Importing the Capital Projects dashboard & reports to your environment

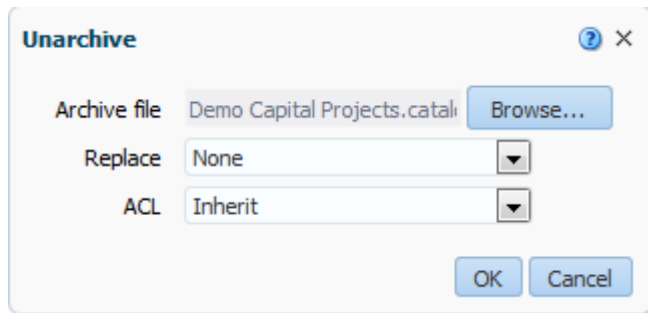
1. Navigate to the BI Catalog
2. Highlight the “Shared Folders” folder



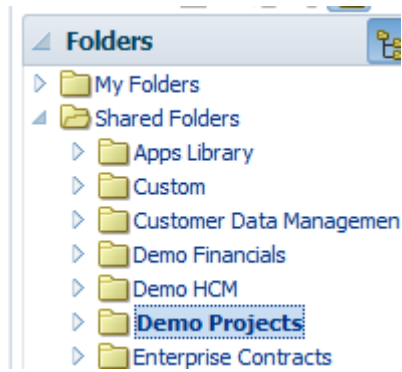
3. Click "Unarchive" from the Tasks menu



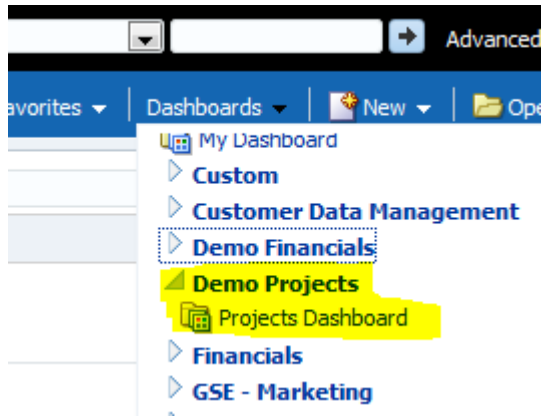
4. Select the catalog archive file provided in this article



5. This will create a folder called “Demo Projects” – you may need to refresh the Catalog view to see it.



6. You should also now have a dashboard called “Demo Projects”



7. Navigate to the dashboard to see the required content